

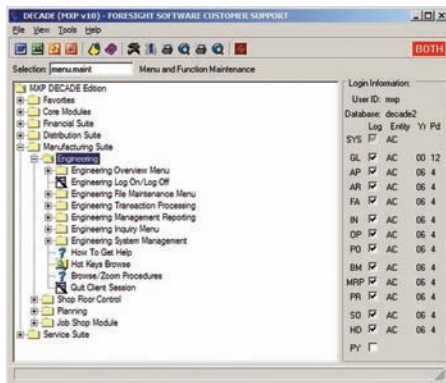
MXP Manufacturing Management Suite

Plan and build your products to maximize profitability.

In today's competitive environment, it's not enough to build a better mousetrap. Product lines must be planned to meet variable forecasts. Components must be received in the right place at precisely the right time. Work center loads must be carefully controlled. Finished inventory must be ready for shipment on demand, on time and on budget.

The MXP Manufacturing Management Suite (MMS) provides robust tools to help plan and/or control discrete or repetitive manufacturing processes in make-to-stock and or make-to-order environments. By putting critical information at your fingertips, MXP MMS gives you complete control over the entire manufacturing process, so your company can adjust shop operations for changing conditions.

The MXP MMS suite integrates seamlessly into the Financial, Distribution and Service suites of the MXP system. Detailed forecast transactions drive MPS/MRP schedules, capacity planning by work center and/or machine, shop floor control of raw material, and WIP inventories. At every stage of manufacturing, the costs associated with each process can be viewed to your preference - by account, product group or specific job. And, complex bills of materials and labor, featuring complete revision, effectivity and supersession maintenance provide additional control of your engineering.



The MXP Manufacturing Management Suite:

- ▶ Contains comprehensive Engineering capabilities, including revision and supersession control, and various costing alternatives
- ▶ Allows you to define work centers, machines and operations with detailed capacity and cost information
- ▶ Provides detailed Forecasting capabilities with multiple simulations
- ▶ Gives full control of Master Schedules and Materials Requirements Plans, including full regeneration and net change
- ▶ Offers the ability to define and control various manufacturing calendars and schedules
- ▶ Delivers full shop control of discrete and repetitive manufacturing types, including full backflush material control

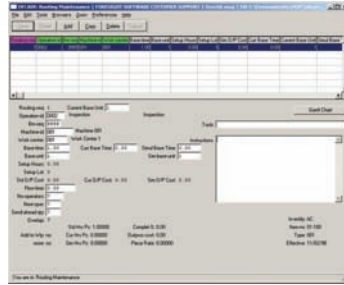
Making products that sit on the shelf is a waste of my time and your money. MXP's Manufacturing Suite helps us plan the work, and work the plan.



The MXP Manufacturing Management Suite includes modules that provide end-to-end control of engineering, planning and shop floor processes, in real time:

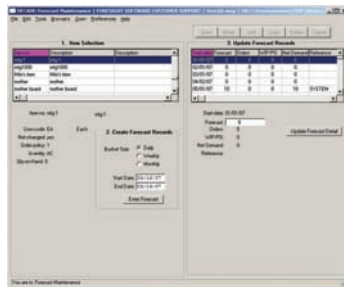
Engineering

Define Bills of Materials and Labor, both current and with scheduled changes. Determine costing methods with standards or by actual activity. Specify Work Center, Machine and Operation details to capture costs as work flows through the process. Perform cost rollups on demand.



Planning

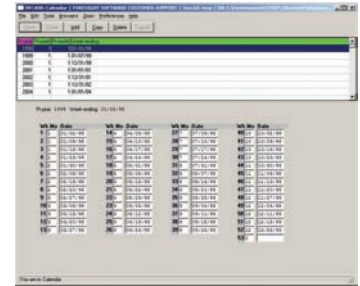
Create detailed item forecasts with user-selectable bucket sizes and full simulation capabilities. Drive forecast data to create Master Schedules and Firm Plans, also with impact simulations.



Create Material Requirements Plans, and automatically generate Work Orders and Purchasing Requirements from MPS/Firm Plans. Modify any of the above as requirements change in the real world.

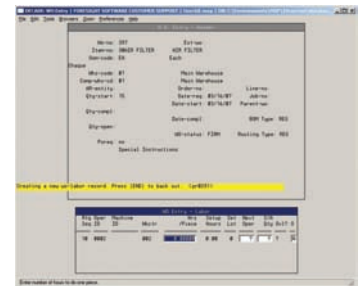
Shop Floor Control

Manage Work Order flow throughout the shop. Schedule (and reschedule) operation sequencing and materials issuance. Issue materials manually, or backflush materials on operation completion. Report actual time consumed in completing operations, and capture the appropriate material, labor and overhead (burden) costs. Control activities versus capacity with detailed reporting and inquiry capabilities.



*Job Shop (MXP Enhancement)

Engineer-to-order facilities can create a detailed estimate of job costs for customers, convert estimates into quotes and actual work orders, and track actual costs (and profits) against the estimates.



Contact us to learn more about how the MXP Manufacturing Management Suite can give your business the control you need to compete profitably.

*optional